

CAPABILITY STATEMENT



GMH
ELECTRICAL
SINCE 1985



TABLE OF CONTENTS

WHO ARE WE?.....	3
KEY TEAM MEMBERS.....	3
CORE VALUES	4
OUR SERVICES	5
OUR CLIENTS	6
OUR PROJECTS	8
LICENCES, ACCREDITATIONS & INSURANCES.....	11
OUR REFERENCES.....	12



WHO ARE WE?

Founded in 1985 by Garry Hallissey, GMH Electrical has thrived as a locally owned and operated business, with experience in domestic, commercial, and industrial installations and maintenance. After 36 years as the managing director, Garry retired and has been succeeded by his two sons, Tom and Ed Hallissey, and long-term employee Daniel Budworth.

Each director brings with them a vast amount of experience in all aspects of the electrical industry, as well as a unique skillset and viewpoint to the business, whilst sharing in the core values and dedication that GMH Electrical encompasses.

Over the past 38 years, GMH Electrical has prided itself on an extensive network of clients and consumers, cultivated through our attention to detail and excellent workmanship.

Over the past two years GMH Electrical has taken positive steps in modernising the business. This has resulted in a large increase in company efficiency and profitability and allowed GMH Electrical to engage in larger projects without impacting ongoing contracts and clients.

DIRECTORS



Daniel Budworth



Tom Hallissey



Ed Hallissey



CORE VALUES



Reliability

We have built an extensive client list which we retain not only from the consistency of our work but also for our dependability. At GMH Electrical, we are always on call, offering 24/7 emergency services.



Professionalism and Quality Assurance

At GMH Electrical, we strive for product excellence and guarantee our services are always trusted and of the highest standard.



Communication

GMH Electrical guarantees to maintain open and honest communication throughout our entire service. We believe transparent communication is vital to achieving the best quality service to all our clients.



Integrity

We act ethically, honestly and are accountable to the work we complete. GMH Electrical believes strong professional relationships are vital foundations to a successful company.



Safety

GMH Electrical prides itself on a flawless safety record. We value the safety of all our employee's, subcontractors, and clients.



Innovation & Creativity

At GMH Electrical, no job is too small. We understand simple solutions are not always the perfect fit, and pride ourselves on being innovative and creative to ensure the satisfaction of all clients.



OUR SERVICES

Our team offer a diverse range of electrical services at the highest quality, including:

- Power, data, and lighting installations
- MATV maintenance and installation
- Scheduled and preventative maintenance
- Electric vehicle charging stations
- Small to medium sized commercial and industrial installations
- Domestic renovations and installations
- LED lighting upgrades
- Domestic, commercial, and industrial switchboard upgrades
- Thermographic testing of switchboards
- RCD testing of circuits
- Test and tagging
- Exit and emergency lighting installation, testing and replacement

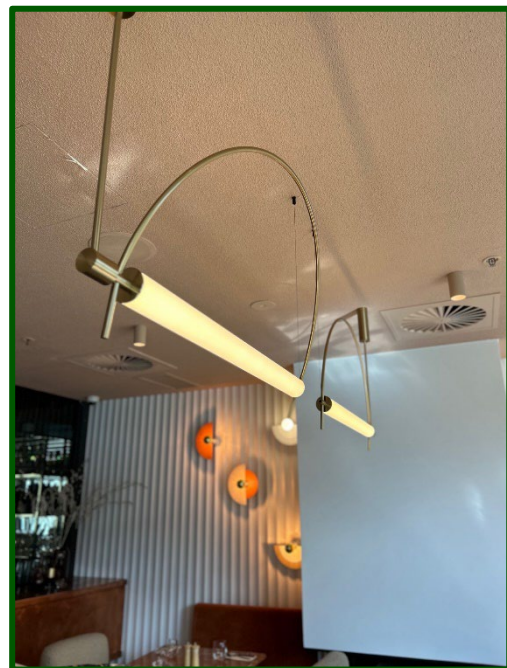


OUR CLIENTS

We specialize in the ongoing and preventative maintenance of businesses, facilities, strata, and property management, whilst also completing new installations and fit outs for numerous builders and organisations. Our client base spans a wide range of industries and sectors.

Strata and Facilities Maintenance

- Belle Commercial
- Link Strata
- Civium Strata
- Vantage Strata
- First Choice Strata
- Canberra Strata
- Signature Strata
- Bright and Duggan Strata
- LJ Hooker Strata
- Knight Frank Facilities
- Colliers International



Embassies and Clubs

- Embassy of Ireland
- Embassy of China
- Hellenic Club of Canberra
- Canberra Labor Club Group
- The Irish Club of Canberra

Residential Property Management

- Distinct Property
- Cream Residential
- Peter Blackshaw Manuka
- Total Property Management
- Capital Prestige Property
- LJ Hooker Residential



Retail

- Aldi
- Kmart
- Target

Industrial & Commercial

- Wainwright facades
- Pro metal work
- Monaro windows
- Norwood Park Crematorium
- Savil Group
- Bellevue Building

Other

- Archdiocese of Canberra
- East Hotel
- Pialligo Estate
- The Truffle Farm





OUR PROJECTS

LED Lighting Upgrade of 38 Thynne Street Bruce

The replacement of over 400 fluorescent light panels with LED fittings to improve the energy efficiency of the office building and to reduce ongoing maintenance costs. To minimise disruption to the office, work was undertaken out of hours and extra care was taken to leave the office space in a neat and tidy condition.

Agostini's Restaurant Terrace Project

Converting an outdoor terrace to an indoor dining space working alongside an interior designer. This renovation required high levels of attention to detail to meet our client's vision. A strict deadline was met so the space could be used for planned functions.





Kmart Gungahlin and Tuggeranong Safety Compliance Audit

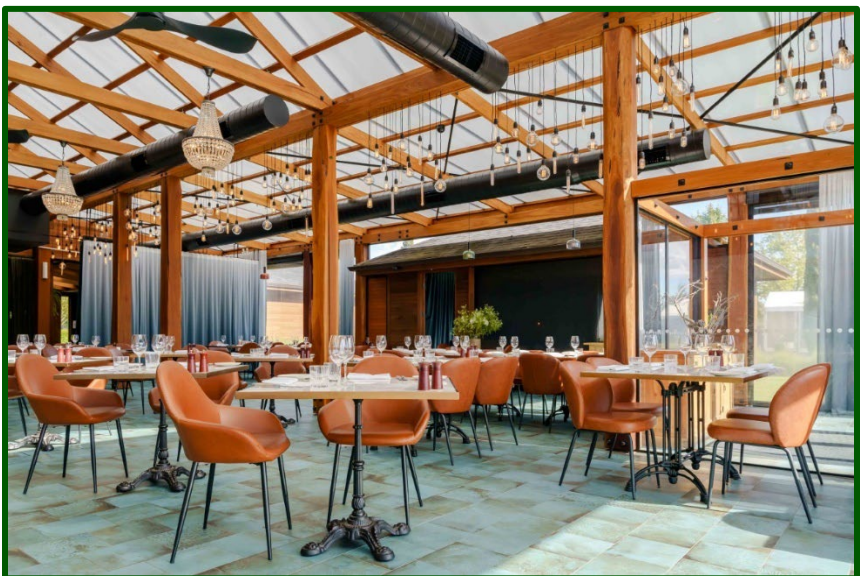
A safety audit of all electrical installations and wiring throughout Kmart Gunghalin and Tuggeranong was undertaken, with an extensive list of issues rectified. This project was completed over a two-week period between the hours of 10pm-5am, with no interruption to Kmart trading hours. During this project, time management was necessary to ensure all existing daytime work was completed and staff members were allocated essential rest between night shifts.

Menslink

Relocation of entire Menslink data rack and telephone systems to free up office space. Extensive design and planning were required to complete this project under a tight deadline. Work was completed over a weekend to reduce impact on operating hours of Menslink.

Pialligo Estate Pavilion Lighting Installation

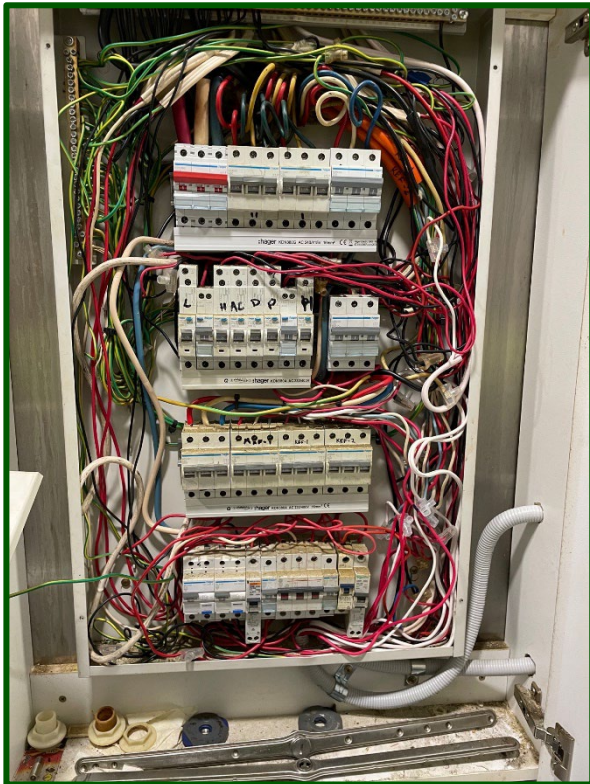
Feature lighting, chandeliers and ceiling fans were installed in large hardwood timber structure. The Estate requested that all cabling for fixtures be hidden to maintain the aesthetic and style they were trying to achieve.





Pialligo Estate Main Kitchen Switchboard Upgrade

Ongoing issues with the switchboard in Pialligo's main kitchen required GMH Electrical to do a full upgrade and relocation. The upgrade included installing RCD protection on every circuit, a requirement that was not necessary when the Estate was initially built.



Yarralumla Electric Vehicle Charging Outlets

A development of 11 townhouses with basement parking in Yarralumla required provisions for electric vehicle charging outlets to all unit garages. Each charger required supply from the individual unit's power, therefore creativity, design and innovation were required to complete the installation. Ninety metres of powder coated aluminium trunking was installed with submains cable and sub boards installed in each garage. GMH Electrical received overwhelmingly positive feedback from all residents and was commended on the timely manner to which the project was completed.



LICENCES, ACCREDITATIONS & INSURANCES

GMH Electrical is fully insured with a comprehensive list of licences and accreditations, these include:

- Electrical licence
- Contractor's licence
- Split system air conditioning and heat pump installation licence
- Construction induction white card
- Asbestos awareness
- Working safely with asbestos
- Working safely at heights
- Operate light and commercial vehicles
- Forklift licence
- Elevated work platform licence
- Cm3 Qualification
- Parliament house security clearance
- ACT police check
- NECA membership
- Public liability insurance
- Workers' compensation



OUR REFERENCES



Andrew McGowan

Program Coordinator

Menslink

M: 0403 470 128



Ben O'Brien

Venue Manager

Canberra Labor Club

M: 0405 447 159



Dennis Godfrey

Facilities Maintenance Manager

Marian Centre

M: 0404 758 419



Nathan Dunn

Director

Belle Property Commercial

M: 0488 216 406



Peter Zakharoff

Senior Strata Community Manager

LJ Hooker Strata

M: 0409 070 987